



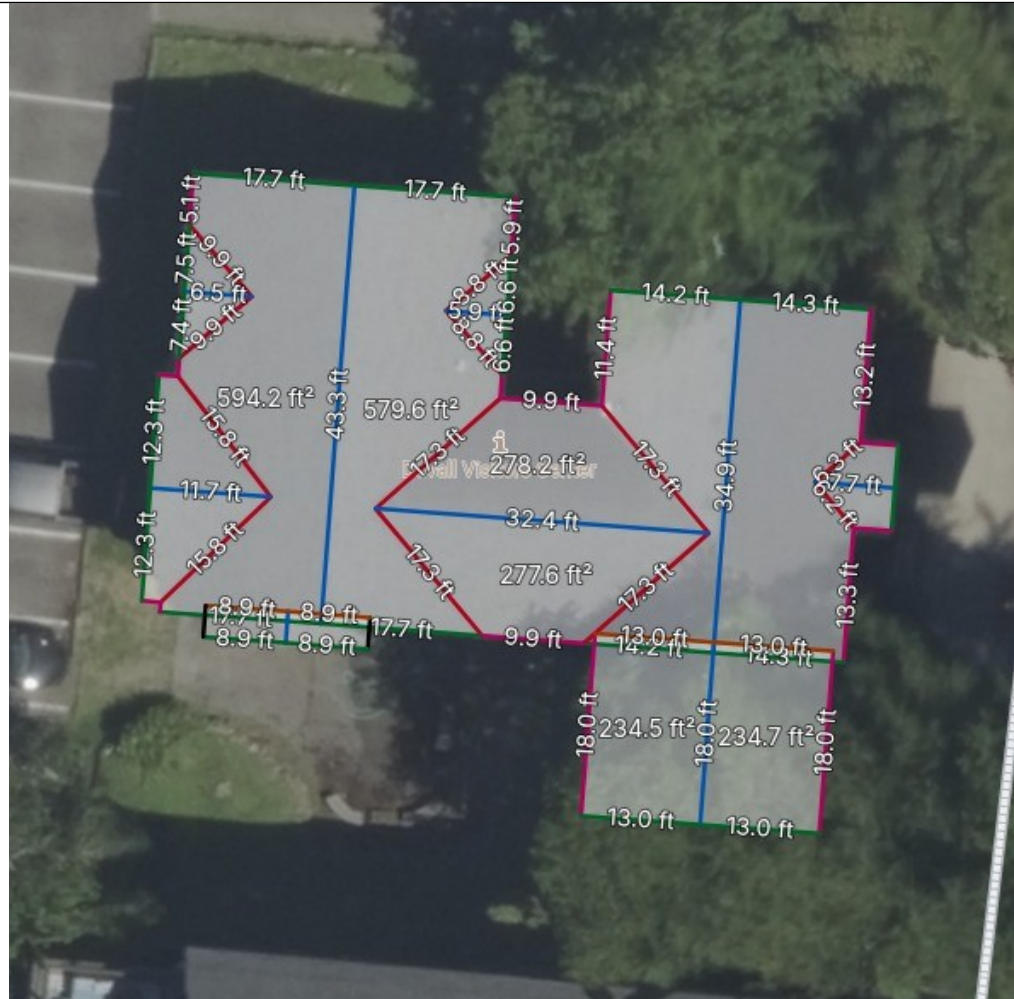
**Order: 263763**

15619 Main St NE, Duvall, WA 98019

Customer: yourorg

Ordered by: orderer@yourorg.com







Reference Id: yourref

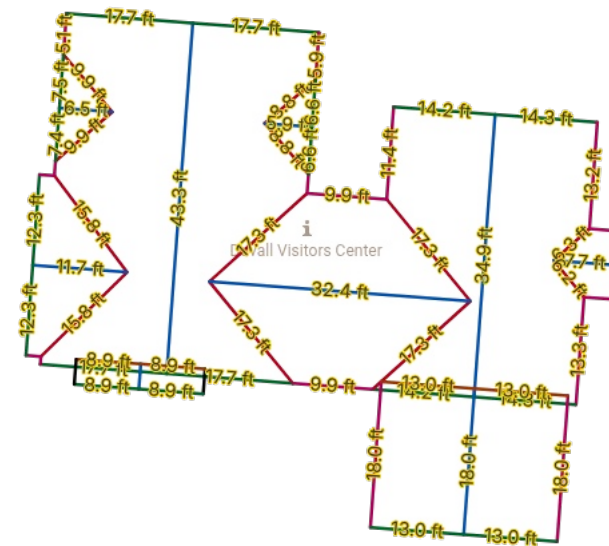


Measurements provided by GEOSPAN®

GEOSPAN Corporation, GEOSPAN is a registered trademark and GEOSPAN 4D is patented as US Patent 11,200,353 B2 and other pending patents.

**JOB:** 164429 | **Reference Id:** yourref | **Building**

Edge totals		
	Color	Length (ft)
Rake		234.0
Ridge		163.5
Valley		150.7
Eave/Starter		126.9
Gutter		120.7
Stepflash		43.9
Drip edge		360.9
Ice & Water		277.6
Ridgecap		163.5

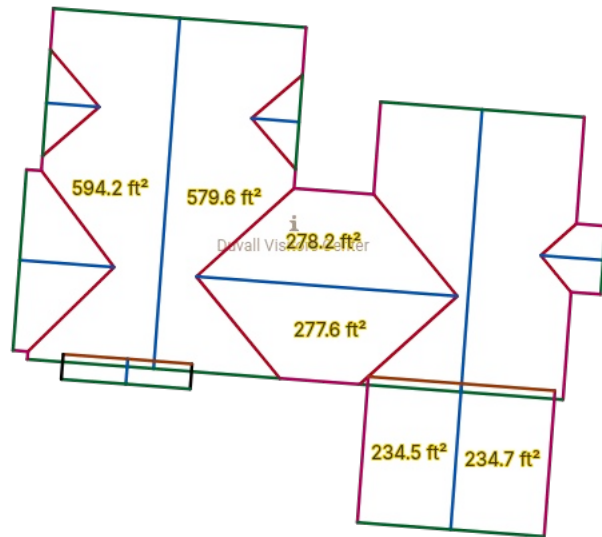


The accuracy of this estimate depends on the availability and clarity of the images provided for the listed address. All measurements are rounded to the nearest non-fractional digit. Rakes are defined as sloped exterior roof edges. Eaves are defined as lowest exterior level roof edges. Drip edge refers to the combined length of eaves and rakes. Waste tables reflect a straight calculation of standard suggested waste amounts. Contractors are advised to confirm the appropriate waste factor before ordering materials.

GEOSPAN Corporation, GEOSPAN is a registered trademark and GEOSPAN 4D is patented as US Patent 11,200,353 B2 and other pending patents.

## Facet Area Measurements

JOB: 164429 | Reference Id: yourref | Building

Facet Areas			
	Area (ft <sup>2</sup> )	Above 26.0 ft	
Asphalt	3,388.6	No	
			

The accuracy of this estimate depends on the availability and clarity of the images provided for the listed address. All measurements are rounded to the nearest non-fractional digit. Rakes are defined as sloped exterior roof edges. Eaves are defined as lowest exterior level roof edges. Drip edge refers to the combined length of eaves and rakes. Waste tables reflect a straight calculation of standard suggested waste amounts. Contractors are advised to confirm the appropriate waste factor before ordering materials.

### Measurements provided by GEOSPAN®

GEOSPAN Corporation, GEOSPAN is a registered trademark and GEOSPAN 4D is patented as US Patent 11,200,353 B2 and other pending patents.

## Facet Pitch Measurements

JOB: 164429 | Reference Id: yourref | Building

Facet Pitches		
	Pitch	Above 26.0 ft
Asphalt	6:12	No

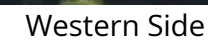
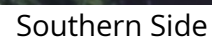
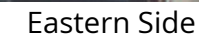
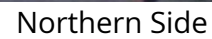
  

The accuracy of this estimate depends on the availability and clarity of the images provided for the listed address. All measurements are rounded to the nearest non-fractional digit. Rakes are defined as sloped exterior roof edges. Eaves are defined as lowest exterior level roof edges. Drip edge refers to the combined length of eaves and rakes. Waste tables reflect a straight calculation of standard suggested waste amounts. Contractors are advised to confirm the appropriate waste factor before ordering materials.

**Measurements provided by GEOSPAN®**

GEOSPAN Corporation, GEOSPAN is a registered trademark and GEOSPAN 4D is patented as US Patent 11,200,353 B2 and other pending patents.







**JOB:** 164429 | **Reference Id:** yourref | **Building Number:** -

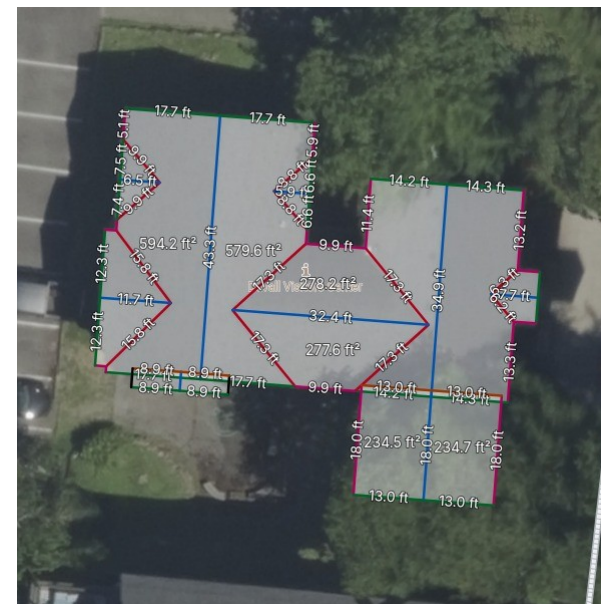




## Order Summary

Reference Id: null

Edge totals		
	Color	Length (ft)
Rake		234.0
Ridge		163.5
Valley		150.7
Eave/Starter		126.9
Gutter		120.7
Stepflash		43.9
Drip edge		360.9
Ice & Water		277.6
Ridgecap		163.5



Facet Measurements			
Type	Pitch	Area (ft²)	Above 26.0 ft
Asphalt	6:12	3,388.6	No

Area With Waste Factor				
0% (ft²)	5% (ft²)	10% (ft²)	15% (ft²)	20% (ft²)
3,388.6	3,558.0	3,727.4	3,896.8	4,066.3

**Measurements provided by GEOSPAN®**

GEOSPAN Corporation, GEOSPAN is a registered trademark and GEOSPAN 4D is patented as US Patent 11,200,353 B2 and other pending patents.